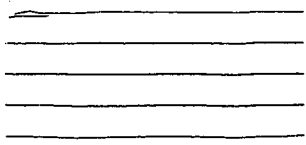
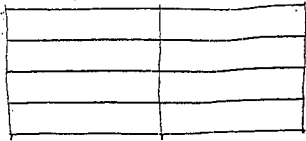




# My Music Symbols Study Guide



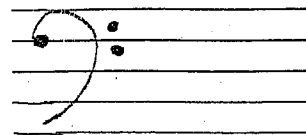
music staff



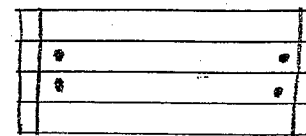
Measures (from barline to barline)



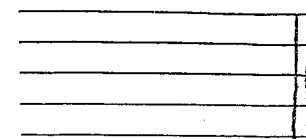
Treble Clef (aka G clef)



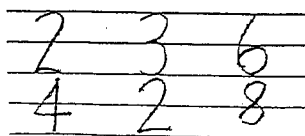
Bass Clef (aka F clef)



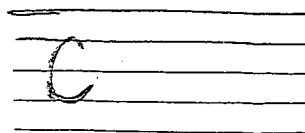
Repeat Signs



Final bar (for end of song)



meter or Time Signatures  
(Top = beats per measure  
Bottom = what gets beat)



Common Time (aka, 4/4 time)



= Cut Time (2/2)

# sharp (raises pitch 1/2 step)

b flat (lowers pitch 1/2 step)

natural (cancels flat or sharp)  
 slur (play different pitches smoothly)

Tied notes (on same pitch, adds total beats)

fermata (hold note extra time)

crescendo (gradually louder)

diminuendo (decrecendo) (gradually softer)

accents (single notes louder)

Segno ("sign" jumps in music)

Coda (special Ending section)

Triplet (3 notes in time of 2)

whole note + rest, 4 beats each

dotted half note, 3 beats

half note + rest, 2 beats

quarter note + rest, 1 beat

eighth note + rest, 1/2 beat

sixteenth note + rest, 1/4 beat